



mod **L**earth

CORPORATE DOSSIER

Landscape photography, cartography and
environmental data analysis

From field work to perfect results

iel. (+34) 654 92 76 51
c.arquero@modlearth.com

modlearth.com

ModlEarth

From field work to perfect results

ModlEarth was created with the purpose of providing innovative, aesthetically pleasing, and visually appealing solutions to landscaping problems, prioritizing technical precision and quality above all else.

We offer efficient solutions tailored to our clients and committed to meeting their deadlines.

Our principles:

- Scientific rigor, precision, and respect to deadlines.
- Environmental protection.
- Constant innovation.
- Sharing knowledge and new analysis methods.
- Systematization of processes.
- LEAN implementation to services and processes.



César Arquero

CEO and founder of ModlEarth

After several years of experience in the technical sector of environmental assessment of renewable energy projects, I became interested in offering my professional services to support other environmental professionals. This is how ModlEarth was born, a company in which I currently participate as CEO and one-man orchestra. I have extensive experience in field work, environmental photography, GIS and 3D software, and programming of data analysis tools.

Telf. 654 92 76 51
c.arquero@modlearth.com

modlearth.com

 [linkedin.com/in/cesararquerocabral](https://www.linkedin.com/in/cesararquerocabral)

 github.com/cesarkero

 [youtube.com/@cesarkero](https://www.youtube.com/@cesarkero)

 twitter.com/cesarkero

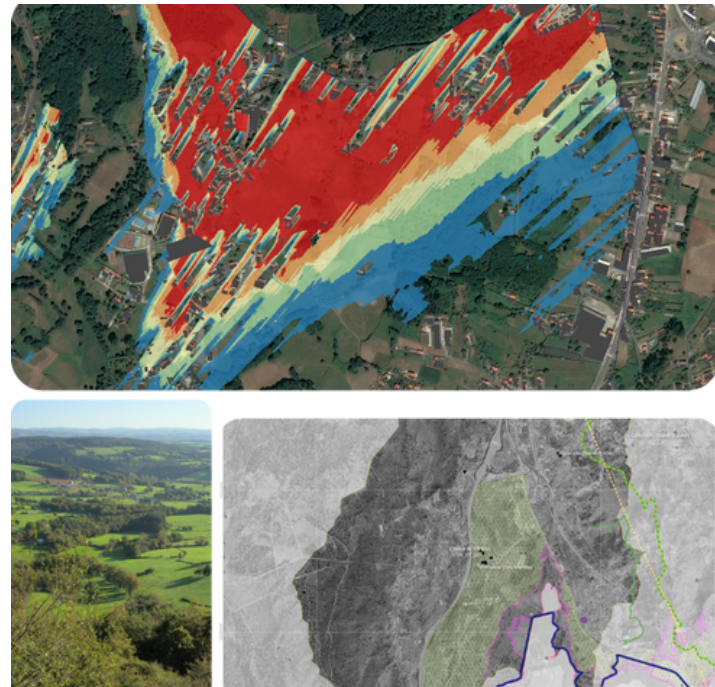


"ModlEarth will streamline your processes so you can focus on what matters."





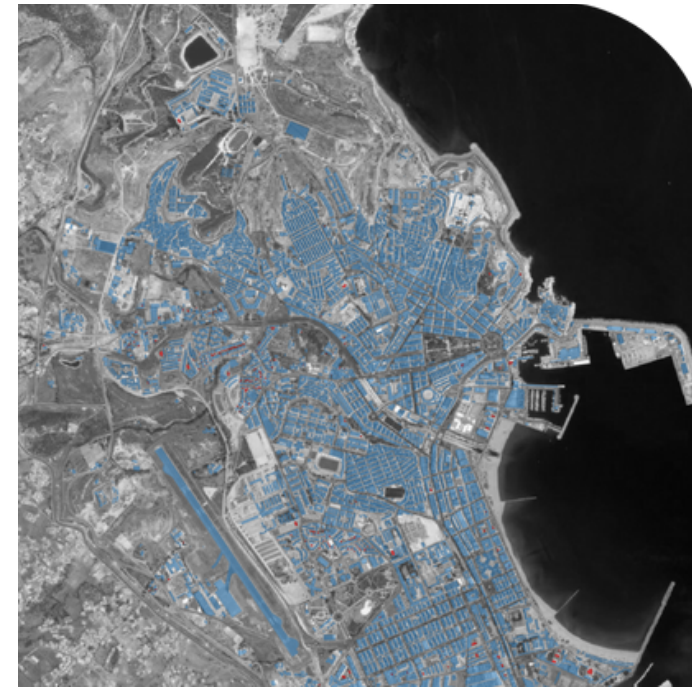
Services



*LANDSCAPING STUDIES
AND CARTOGRAPHY*



*LANDSCAPE PHOTO AND
3D ANALYSIS*



*DATA ANALYSIS TOOLS,
LIBRARIES AND PLUGINS*



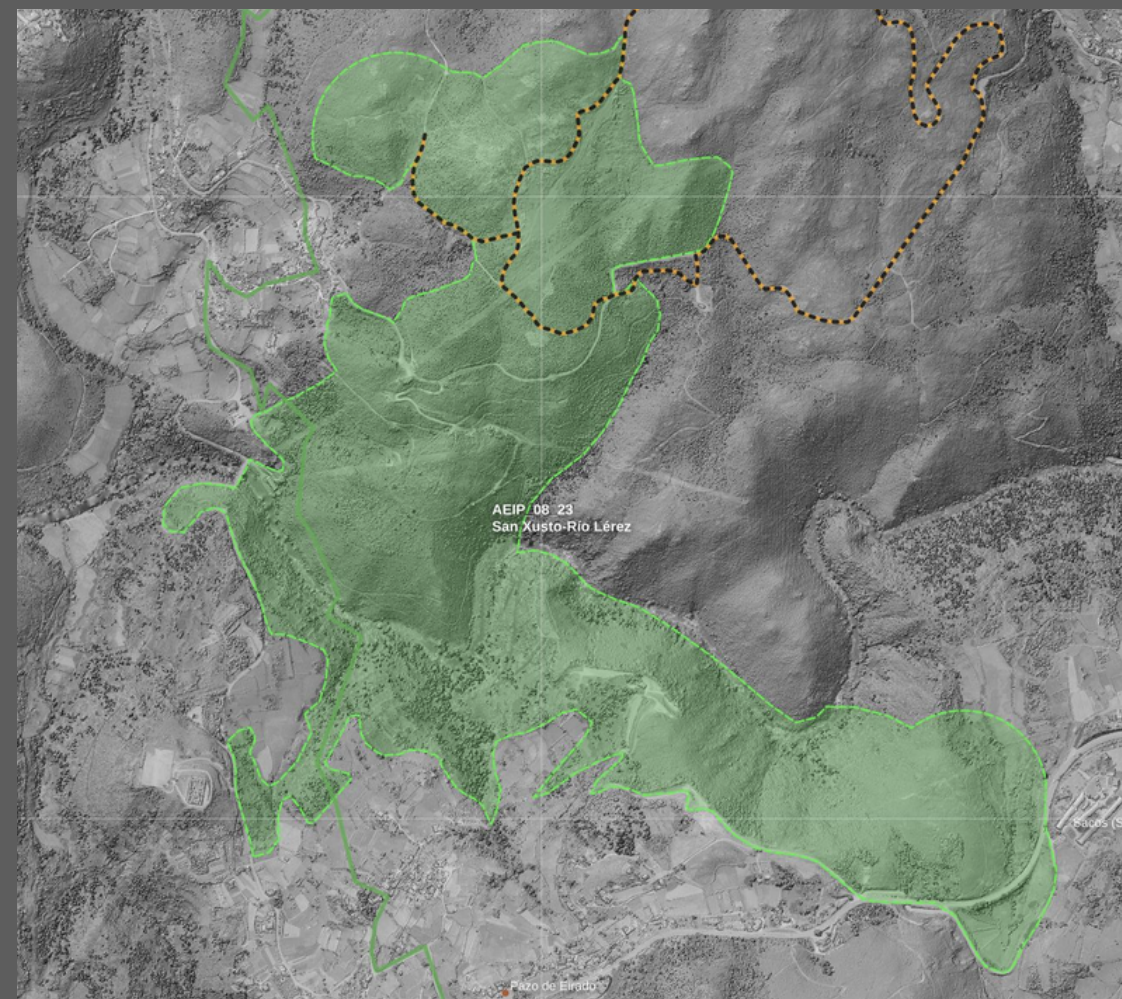
*CONSULTING AND
TRAINING*

Landscaping studies and cartography

To protect natural heritage and our landscapes, we must first understand them. We are experts at capturing the essence of a place, thanks to representative photographs, videos, and cartography.

What do we do?

- Field work, data capture, and digitization.
- Landscape Impact and Integration Studies.
- Technical assistance in Environmental Impact Studies.
- Cartography and GIS Analysis.



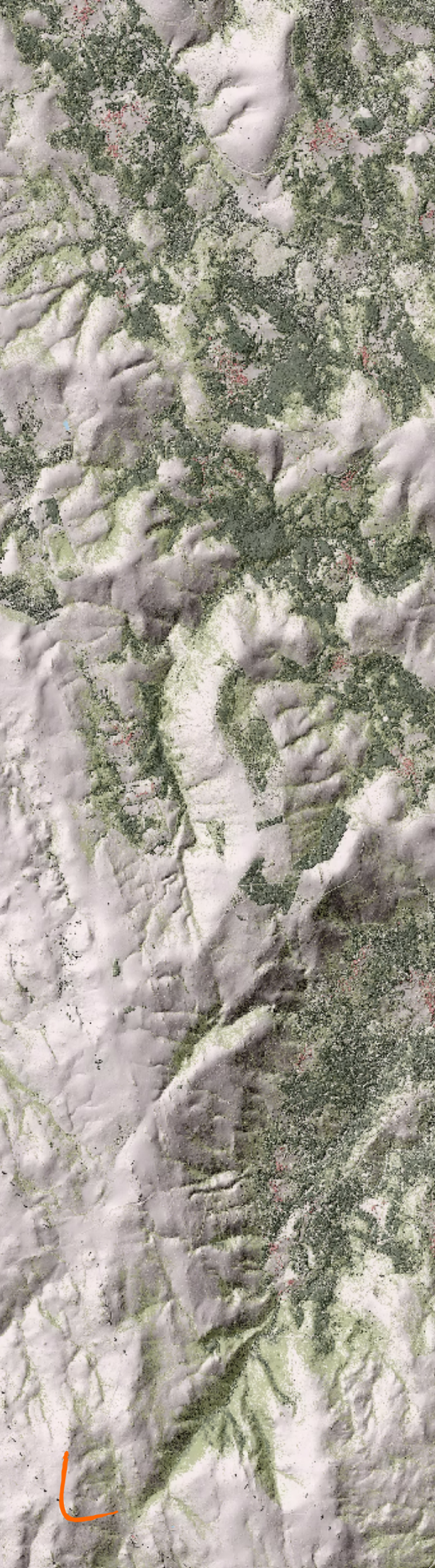
Landscape photography and 3D modeling and rendering



We perform precise photography and video for the photorealistic representation of projects. We also develop innovative products using immersive 360° photography and video. We specialize in renewable energy and high-voltage lines, but we love challenges. What do you need?

What do we do?

- Landscape photography for renewable energy projects and evacuation lines.
- 360° photography and environmental virtual tours.
- 3D rendering for photography and video.
- Dron photography and video.
- Landscape desing and photorealistic representation of projects.
- Three-dimensional mapping of projects.



Environmental data analysis and tools

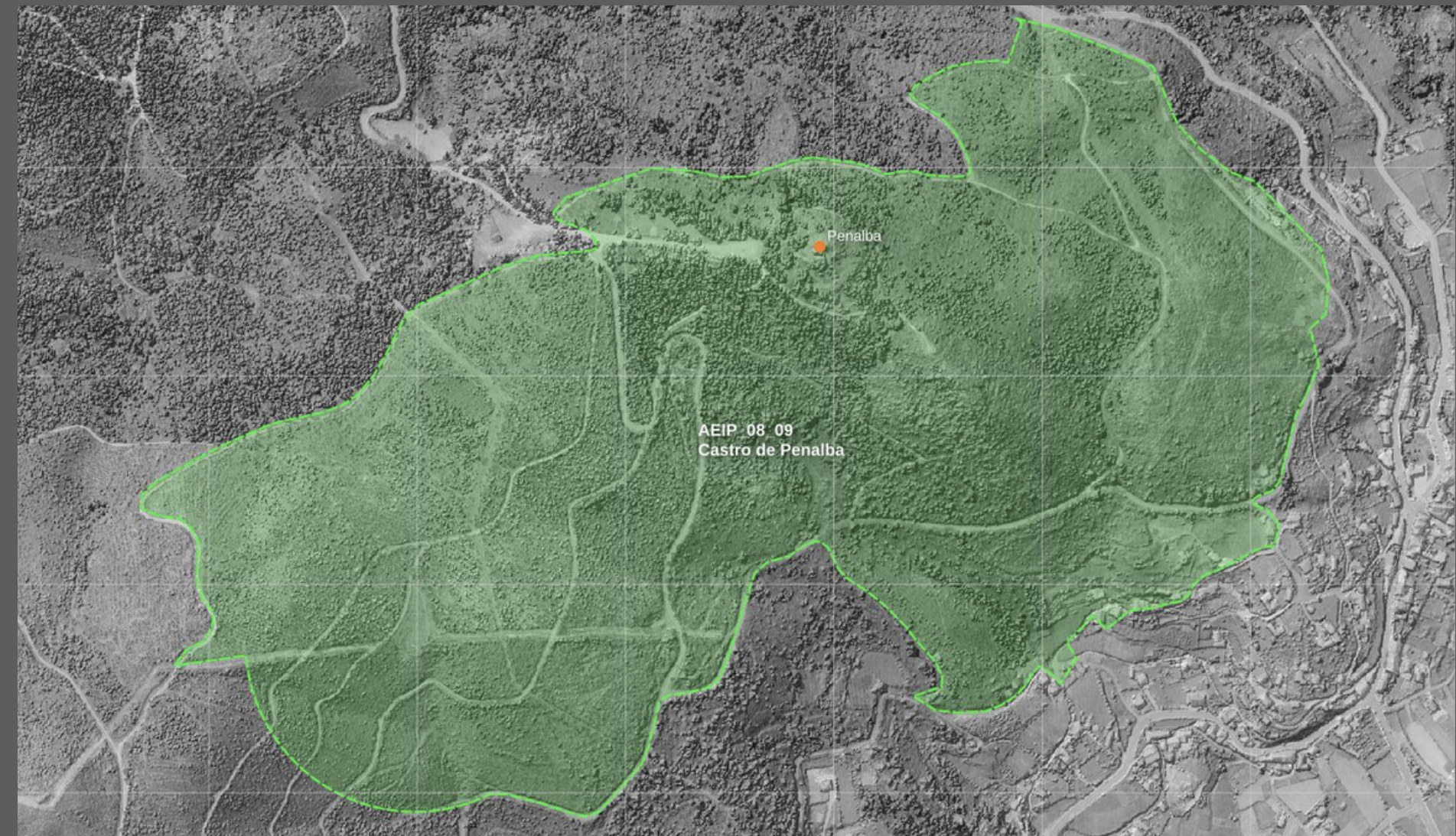
We love optimizing processes, increasing the quality of products while reducing processing times. We develop data capture, data management, and process channeling tools for all types of information. From optimizing your libraries and functions to exposing your data through web tools, we love eliminating inefficiencies.

What do we do?

- Environmental data analysis
- Machine learning models for environmental data
- Automated thematic cartography
- Process parallelization
- Custom R scripts, libraries, and tools
- Python scripts and tools for QGIS and Blender
- Web Apps (Shiny app, Jekyll Pages, and Data Studio)
- Automated data scraping and captures

Individualized and team-based personal training

- **R - Data analysis**
 - Systematization of processes, advanced functions, and object-oriented programming in R.
- **Photography and videography**
 - Data capture and management for environmental studies.
 - Editing and photographic management with free tools.
- **QGIS**
 - Layout and advanced programming of printable compositions.
 - Advanced labels and styles.
 - Basic programming in R and Python for QGIS.
- **Blender**
 - Python for Blender
 - R for Blender
 - Advanced composition tools and nodes.



Consulting and Training

Expertise

Milestones and achievements

- Open tools for mass data download (R).
- Virtual recreation of moving wind turbines.
- Mass loading of 3D objects in Blender using geographical information layers (houses, administrative boundaries, vegetation, etc).
- 360° photograph rendering.
- Photorealistic recreation of electrical power lines.
- Large-scale visual basin analysis on high-resolution MDS and MDT.
- Parallelization of complex cartographic processes.
- Scripts for semi-automatic tasks in bash (linux) and bash shell (windows).
- Leaflet map visualization in jekyll pages.
- Generation of HDRI files for landscape projects.



Projects

- Landscape Impact and Integration Studies (PE Abegondo, Maxal, Carballoso, Hedreira...).
- Visibility and integration study in Emboquille de A Graña (Ferrol).
- Partial Plan PSUN12 - Industrial Zone (Concello de Teo).
- Visibility studies from Galician heritage elements.



modLearth

Tel. 654 92 76 51
c.arquero@modleearth.com

modleearth.com
